



# UPGRADES

HOLISTIC, SUSTAINABLE  
AND FUTURE-PROOF.

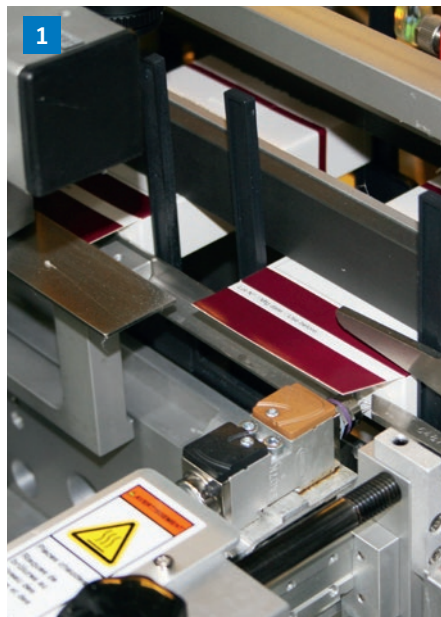
# UPGRADES

The ongoing development of hardware and software as well as the implementation of new regulations and laws govern the day-to-day work of pharmaceutical manufacturers. In addition, many pharmaceutical companies have set ambitious sustainability goals for themselves and are taking responsibility for our environment and society. This demands the regular adjustment of packaging machinery and processes. Uhlmann specialists

make your packaging machines fit for the future and bring them up to the latest technical standards in compliance with existing legislation – whether by fitting new mechanical, electrical, or control components, or by carrying out the scheduled exchange of parts subject to wear and tear. We also have compatible solutions for discontinued components.

## DIVERSE UPGRADE OPTIONS TO MEET THE REQUIREMENTS OF TOMORROW:

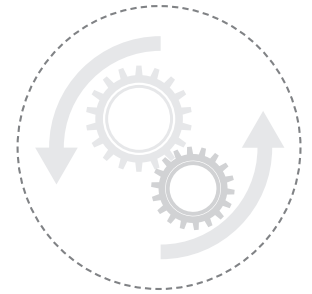
- 1 Retrofitting of individual elements.**  
Examples: Integration of carton closure technology to meet tamper-evident requirements; or the upgrade package to solve static electricity effects when using a SimTap feeder.
- 2 Upgrade of one or more components.** Examples: Change-over of the operating system to the current Windows architecture; or the installation of state-of-the-art drive technology.
- 3 Complete machine rebuild.**  
Example: Significant life extension of a Blister machine UPS 1040 – for greater sustainability.



## UPGRADES

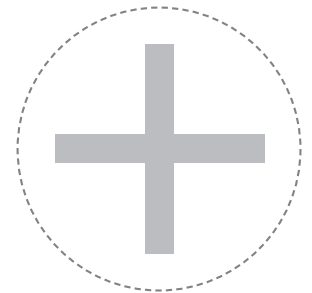
### A SUITABLE SOLUTION TO MEET EVERY NEED

- Upgrade of all mechanical and electrical components, control circuits, and displays.
- Replacement of discontinued components by compatible alternatives.
- Exchange of heavily utilized and thus worn parts – at a time that is convenient to you.
- Upgrades and accessories to enhance production.
- Integration of additional automation components.
- Adaptation of processes to comply with latest regulations.
- Contribution to greater sustainability in the company.



### YOUR BENEFITS

- Machines adapted to meet state-of-the-art standards and the latest legislation.
- Guaranteed availability of your packaging machine, enhanced productivity and efficiency.
- Reduced operating costs.
- Guaranteed spare parts availability.
- Minimized risk of unplanned machine downtimes.
- All-inclusive: OEM service, sound advice on the basis of extensive experience, qualification/validation, detailed rebuild documentation.



Learn more about  
Uhlmann Customer Services.  
<https://www.uhlmann.de/services>

THE **HEARTBEAT** OF PHARMA PACKAGING

To find our locations worldwide  
please visit [www.uhlmann.de](http://www.uhlmann.de)

 A member of  
**Excellence United**

**Uhlmann Pac-Systeme  
GmbH & Co. KG**  
Uhlmannstrasse 14–18  
88471 Laupheim  
Germany  
Phone +49 7392 702-0  
[info@uhlmann.de](mailto:info@uhlmann.de)